

**\*\*MAIN LINE DISCONNECT & CAB LIGHT DISCONNECT BY OTHERS\*\***

MAIN LINE DISCONNECT  
3 POLES  
(1 FOR BATTERY LOWERING)

CAB LIGHT DISCONNECT  
1 POLE

MAIN CONTROL BOX  
23"H X 20"W X 6.5"D

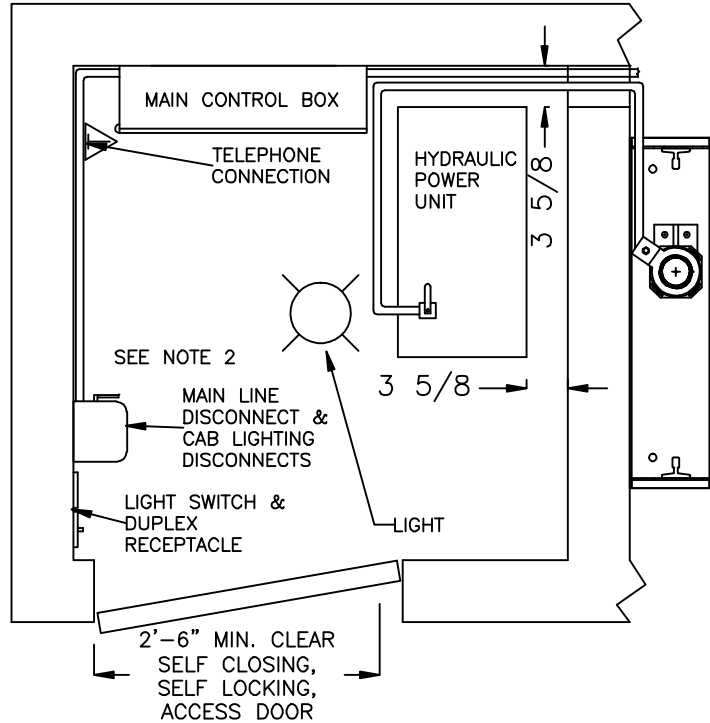
SUBMERGED POWER UNIT  
33"H X 30"W X 14"D

WHEN DEEMED NECESSARY  
ALL ELEVATOR EQUIPMENT  
SHALL BE LOCATED ABOVE  
FLOOD PLANE AND UNIT  
SHALL BE EQUIPPED WITH  
PIT FLOAT SWITCH PER  
SEI/ASCE 24-98

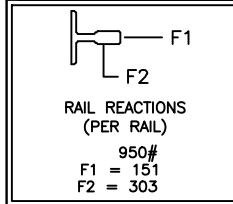
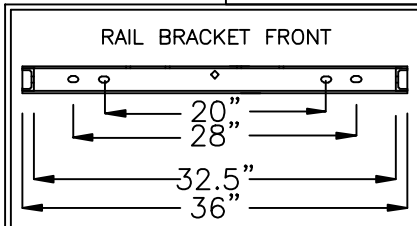
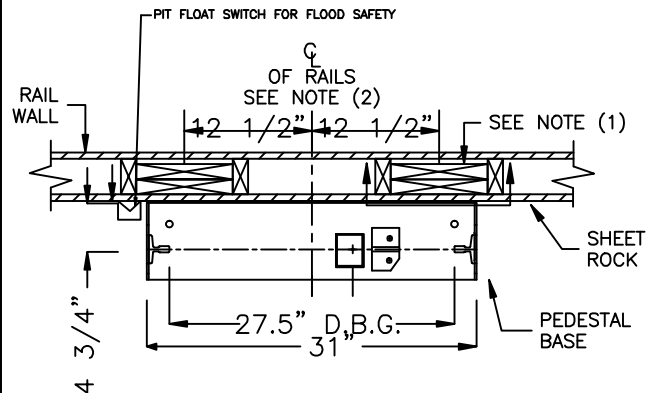
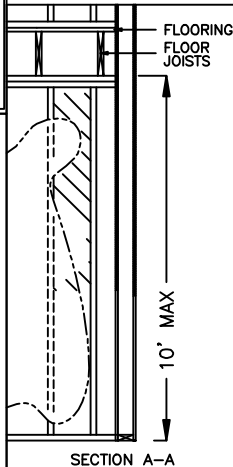
**\*\*DEALER IS RESPONSIBLE  
FOR INSURING THAT THE  
MACHINE SPACE LAYOUT AND  
THE MACHINE LOCATION  
MEET CODE REQUIREMENTS  
IMPOSED BY LOCAL  
AUTHORITY HAVING  
JURISDICTION\*\***

**NOTES:**

- 1) LOCAL, STATE, & NATIONAL CODES MUST ALWAYS BE FOLLOWED.
- 2) 3'-0" CLEARANCE IN FRONT OF THE CONTROL PANEL AND DISCONNECTS REQUIRED BY NEC
- 4) MAIN LINE DISCONNECT AND LIGHTING DISCONNECT TO BE FUSED AND CAPABLE OF BEING LOCKED IN THE OPEN POSITION.
- 5) THE PUMP UNIT SHOULD NOT BE OVER 40' AWAY FROM THE CYLINDER.



**ADJACENT MACHINE SPACE**



**CONTRACTOR'S RESPONSIBILITY:**  
PROVIDE ADEQUATE WALL SUPPORTS FOR T-RAIL FASTENINGS. VERTICAL INTERVALS NOT TO EXCEED 10'0". COMPLY TO ALL PERTINENT BUILDING CODES FOR HOISTWAY CONSTRUCTION AND FIRE RATING. HOISTWAY TO BE VERTICAL WITHIN 1/2" THROUGHOUT ENTIRE HEIGHT.

- NOTES:**
- (1) TWO 2X10's LAMINATED, SUPPORTED AND FASTENED BETWEEN 2-2X4's RECESSED IN HOISTWAY WALL BEHIND THE SHEETROCK.
  - (2) RAIL CENTERLINE CAN BE LOCATED ON THE HOISTWAY OVERVIEW DRAWING.

**A.H.E. MANUFACTURING INC.**  
127 RT 9 SOUTH BARNEGAT, NJ 800-530-4040

1:2 roped hydro

SCALE: NONE	DATE:	DRAWN BY:	DRAWING NUMBER:
DEALER:			
JOB:			